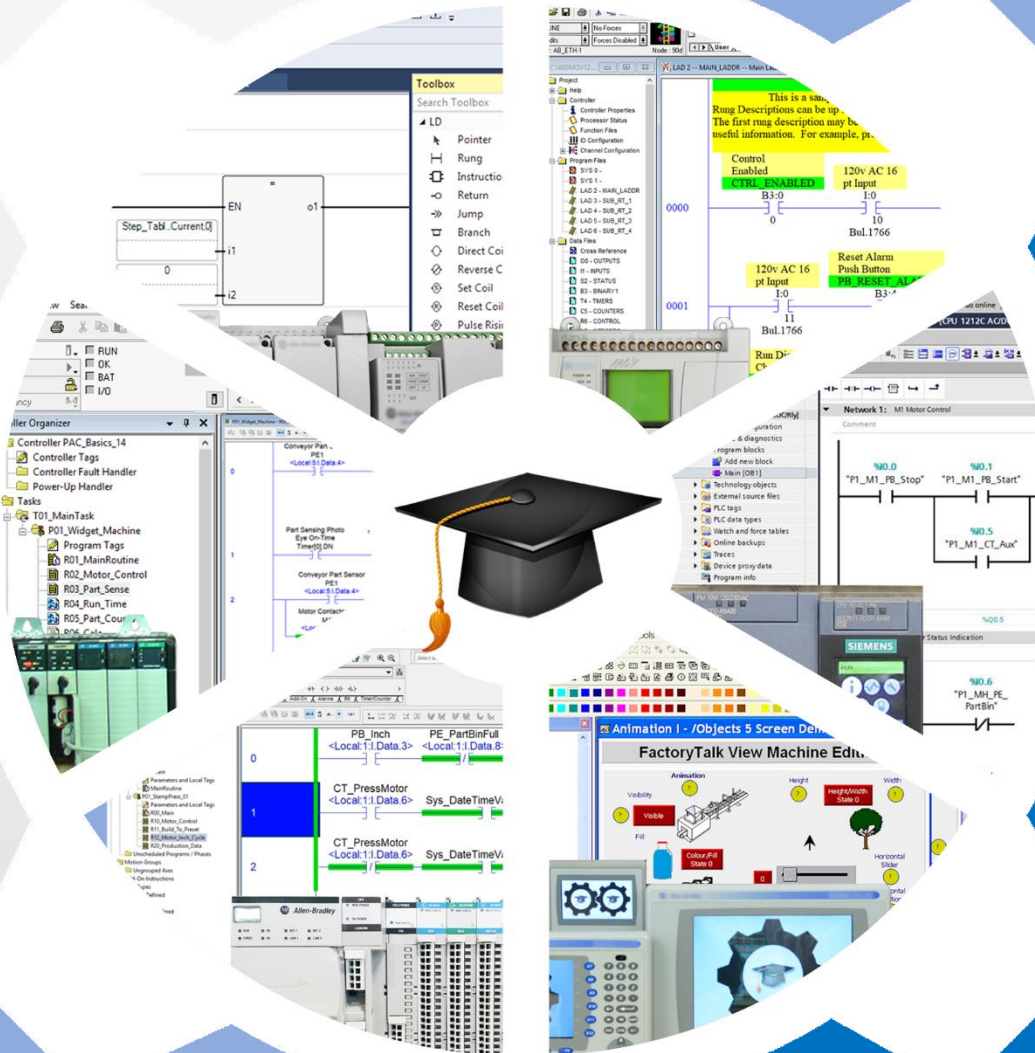




The Automation School™



Spring 2024

TAS-CAT-24-04A



The Automation School™

Spring 2024 Course Catalog

PLC Basics™ Course (<i>MicroLogix, RSLogix, Emulate</i>)	Page 4
Nano Basics™ Course (<i>Micro800, CCW</i>)	Page 5
Compact Basics™ Course (<i>CompactLogix, Studio 5K</i>)	Page 6
PAC Basics™ Course (<i>ControlLogix, Studio 5K</i>)	Page 7
S7 PLC Level 1 Course (<i>S7-1200 & S7-1500, TIA Portal</i>)	Page 8
PVP Basics™ Course (<i>PanelView Plus, 6, 7, ViewME</i>)	Page 9
ViewSE Basics™ Course (<i>FactoryTalk View Site Edition</i>)	Page 10
CCW VFD Quick Start™ (<i>CCW used with PowerFlex</i>)	Page 11
2024 Course Bundles (save up to 50%!)	Page 12
Group Enrollment for Business (3 of more students)	Page 13
Training Quote Request Form	Page 14
Training Payment Form	Page 15

Learn how to setup, configure, and program the **Allen-Bradley MicroLogix Programmable Logic Controllers** using RSLogix 500 or RSLogix Micro in **PLC Basics**

Level 1 Lesson Topics:

(Included with 1st and 2nd Edition courses)

Hardware

- What a PLC is
- Where PLCs are used
- Anatomy of a PLC
- Styles and Types
- Common Inputs and Outputs
- PLCs used in this course
- MicroLogix Hardware Tour
- Programming Cables
- Manuals and Documentation

Numbers and Data

- Numeral Systems & Types of Numbers
- Digital Information & Data Types

Ladder Logic and RSLogix Software

- What Ladder Logic is & How it works
- PLC Scan Detailed
- Download and Install Software
- Using RSLogix Micro
- Browsing Data and Program Memory

Communications

- RSLinx Emulate Setup
- RSLinx Serial Setup
- RSLinx Ethernet Setup

Basic Programming

- Basic Bit Instructions
- Motor Control

Additional Instructions

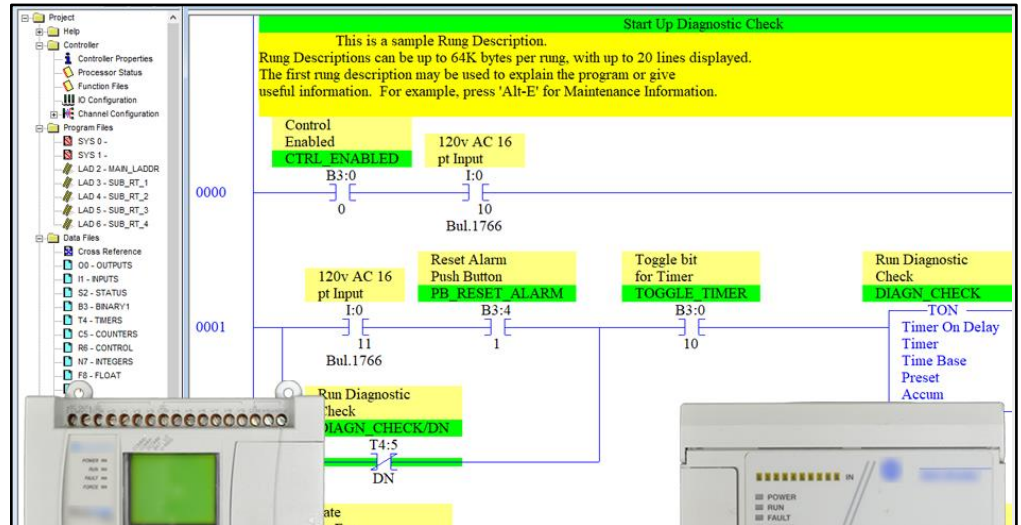
- Using TON and CTU instructions
- Using ADD and SUB instructions
- Using MUL and DIV instructions
- Using GRT and LES instructions

Level 2 Lesson Topics:

(Included with Extended 2nd Ed. course only)

Photo Eyes, Timers, and Counters

- Bin Full Detection
- Sense Jam, No parts
- Elapsed Run Time
- Delay Time
- Part Counting
- Copy Part Counts
- Conditional Resets
- Includes New 2024 Course Update*
- Includes Remastered 1st Ed. Course*



PLC Basics is designed for those students who have basic electrical knowledge, and want to learn how to setup, program, and troubleshoot PLCs - perfect for new PLC users! The specific PLCs covered in this course (pictured above) include the Allen-Bradley MicroLogix 1100 and 1000, both of which can be programmed using the free RSLogix Micro Starter Lite software.

What students will learn:

- What a PLC is
- Styles and Types of PLCs
- Numbering Systems and Data Types
- What Ladder Logic is and how it works
- How to setup Serial and Ethernet Communications
- Creating, Testing, and Troubleshooting MicroLogix Programs in RSLogix
- How to integrate Push Buttons and Pilots Lights with PLC Logic
- How to use PLCs in a Motor Control circuit
- And much more in the Extended Edition

Who should take this course:

- Anyone with basic electrical knowledge who would like to learn how to use, program, and troubleshoot Programmable Logic Controllers (PLCs.)

What students need to complete hands-on exercises:

- Windows 7, 8, or 10 PC with Ethernet or USB port and an internet connection
- Free RSLogix Micro Starter Lite programming software (how to get is covered in course)
- A MicroLogix 1000 or MicroLogix 1100, and compatible PC and Cables on students PC, or
- Free RSEmulate 500 Emulation software to simulate the PLC (how to get is covered in course)

Course Editions (Note: Online courses include instructor support, completion certificate, and lifetime access)

- **TAS-PLC22-O*** PLC Basics Second Ed. Extended Online Course (Level 1 and Level 2 Topics) **\$99⁹⁹**
- **TAS-PLC91-O** PLC Basics First Ed. Remastered Online Course (Level 1 Topics, upgradeable to Extended/1&2) **\$34⁹⁹**

* For a Limited Time: Includes PLC Basics 1st Ed Remastered

Note: TheAutomationSchool.com is neither affiliated with or an official representative of any third-party company or product mentioned in this document.

All trademarks listed are the property of their respective companies.

Learn how to setup, configure, and program Allen-Bradley Micro800 Nano Programmable Controllers using CCW in Nano Basics

Level 1 Lesson Topics:

(Included with Standard and Extended courses)

Hardware

- Micro800 Controllers
- Selecting Components
- Hardware Unboxings
- Local Rockwell Representative

Software

- Downloading CCW Software
- Installing CCW on Windows 7, 10
- Update: Windows Patch Issues

Communications

- RSLinx Classic Configuration
- Setting up USB Comms
- Setting up Ethernet Comms
- Flashing Firmware

Programming

- Motor Control using Ladder Diagram routines.
- Part Sensing (LD) with Photo Eyes
- Machine Runtime using FBD
- Part Counting using FBD
- Performing Calculations using ST
- Exporting and Importing Programs

Level 2 Lesson Topics:

(Included with Extended course only)

Analog and Expansion I/O

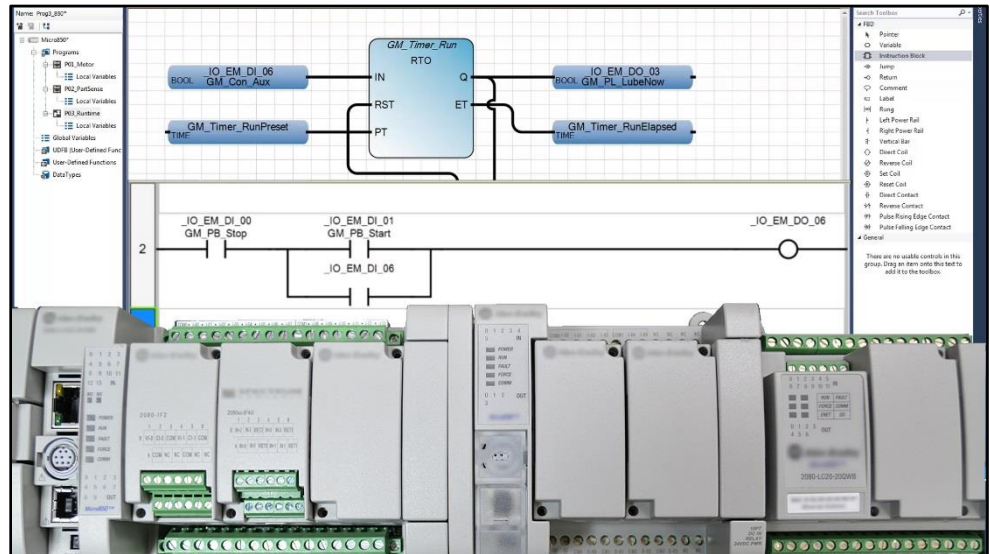
- Using and Scaling Analog Inputs
- Using and Scaling Analog Outputs
- Using Universal Analog Inputs
- Using Plugin and Expansion I/O
- Using Serial Plug-In with Modbus

Variable Frequency Drives

- Controlling VFDs over Modbus
- Setting up VFDs on Ethernet
- Controlling VFDs over Ethernet

Human Machine Interfaces

- Creating a PanelView 800 Project
- PanelView 800 Motor Control Screen
- PanelView 800 Download & Test



Nano Basics is designed for those students who have basic PLC knowledge and would like to learn how to setup, program, and troubleshoot the Allen-Bradley Micro800 line of Nano Programmable Controllers using Connected Components Workbench.

What students will learn:

- Understand the design of the Micro800 Family of Nano PLCs
- How to choose Micro800 components and configure a system
- How to get the free programming software and how it works
- How to setup Micro800 and RSLinx Ethernet and USB communications
- How to Flash Controller Firmware over Ethernet and USB
- How to create and test a Motor Control routine in Ladder Logic
- How to create and test a Part Sensing routine using Photo Eyes
- How to create and test a Machine Runtime routine in Function Block
- How to create and test a Part Counting routine in Function Block
- How to create and test a Mathematical Calculation routine in Structured Text
- How to Export and Import Micro800 Programs using CCW
- And much more in the Extended Edition!

What students need to complete hands-on exercises:

- Windows 7, 8, or 10 PC with Ethernet or USB port and an internet connection
- Free Connected Components Workbench programming software (how to get is covered in course)
- An Allen-Bradley Micro800 with USB or Ethernet communications, or
- Free Micro800 PLC Simulator included in Connected Components Workbench

Course Editions (Note: Online courses include instructor support, completion certificate, and lifetime access)

- **TAS-NAN21-O** Nano Basics Standard Online Course (Level 1 Topics, upgradeable to Extended) **\$49.99**
- **TAS-NAN22-O** Nano Basics Extended Online Course (Level 1 and Level 2 Topics) **\$99.99**

Note: TheAutomationSchool.com is neither affiliated with or an official representative of any third-party company or product mentioned in this document. All trademarks listed are the property of their respective companies.

Learn how to setup, configure, and program Allen-Bradley CompactLogix Small Programmable Automation Controller in Compact Basics

Level 1 Lesson Topics:

(Included with Standard and Extended courses)

Hardware

- Finding and Using Product Manuals
- Overview of Five Generation of Hardware
- CompactLogix Controller Architecture, OS
- Selecting System Components, Using IAB
- 1769, 1734, 5069 I/O Setup, Forcing

Software

- History, Packages and Versions
- RSLogix and Studio 5000 First Look
- RSLinx Driver Setup and using BOOTP
- ControlFlash and Firmware Files

Communications

- Ethernet - Multicast vs Unicast
- Distributed Ethernet I/O
- Testing and Troubleshooting I/O
- How to setup RSLinx Classic Drivers
- Flashing Controller and Module Firmware

Programming

- Controller Properties
- Tasks, Programs, Routines, Tags
- Controller and Program Tags
- Logix Ladder Logic Diagram Routines (LD)
- Creating a Motor Control Ladder Routine
- Using Photo Eyes for Part Sensing (LD)
- Track Production with Timers and Counters
- How to Code Building to a Preset
- Controller Time and using the GSV
- Creating and Using Trends
- How to Code Jogs & Single Cycles
- Migrating Projects to the 5380

Level 2 Lesson Topics:

(Included with Level 2 course only)

Advanced Programming

- How Function Block (FBD) Routines work
- Machine Maintenance Routine (FBD)
- Material Sensing Routine (FBD)
- Machine Alarm Routine (FBD)
- Feed and Eject Routine (FBD)
- How Structured Text (ST) Routines work



Our CompactLogix Level 1 Course (Compact Basics) is designed for those students who are already familiar with PLCs, and would like to learn how to setup, program, and troubleshoot the CompactLogix using RSLogix 5000 and Studio 5000

What students will learn in the Level 1 Course:

- Understanding the design and different models of CompactLogix Controllers
- The difference between RSLogix 5000 and Studio 5000
- How to size a system, choose components, and configure Controllers, I/O, and Comms
- How to setup Ethernet, Serial DF1, and USB drivers in RSLinx Classic
- How to setup, configure, and edit RSLogix/Studio 5000 projects
- How to add, edit, and test Local I/O, and Distributed Ethernet I/O
- Understanding Controller and Program tags, and how to create and edit Tags and Aliases
- How to setup, configure and edit Tasks, Programs, and Routines
- How to create and troubleshoot Motor Control Ladder Routines
- How to create and troubleshoot Part Sensing Routines
- How to use Timers and Counters to Track Production
- How to create and troubleshoot code to Build to a Preset Number of Parts
- Controller Time and using the GSV Instruction, Creating and Using Trends
- Considerations when Migrating Projects to the 5380

What students need to complete the optional hands-on exercises:

- Windows 10 PC, preferably with an Ethernet or USB Port and an internet connection
- An Allen-Bradley CompactLogix Controller (may also require a power supply & end cap)
- A licensed version of RSLogix/Studio 5000 that supports your CompactLogix Controller

Note: There are no free editions of the programming or emulation software, however 30 day trail copies are available directly from Rockwell.

Course Editions (Note: Online courses include instructor support, completion certificate, and lifetime access)

- **TAS-CPX21-O** Compact Basics Level 1 Online Course (Level 1 Topics, upgradeable to Level 1 and 2) **\$99⁹⁹**
- **TAS-CPX22-O** Compact Basics Level 1 & 2 Online Course Bundle (Level 1 and Level 2 Topics) **\$149⁹⁹**

Note: TheAutomationSchool.com is neither affiliated with or an official representative of any third-party company or product mentioned in this document. All trademarks listed are the property of their respective companies.

Learn how to setup, configure, and program the **Allen-Bradley ControlLogix Family of Programmable Automation Controllers** in **PAC Basics**

Level 1 Lesson Topics:

(Included with Standard and Extended courses)

Hardware

- Design of System
- Overview of System Components
- ControlLogix Controller Anatomy
- Manuals and Documentation

Software

- Packages and Versions
- RSLogix 5000 vs Studio 5000
- Update: Windows Patch Issues
- RSLogix and Studio 5000 First Look
- Controller Properties
- Tasks, Programs, Routines, Tags

Communications

- Ethernet and ControlNet Addressing
- How to setup RSLinx Classic Drivers
- Flashing Controller and Module Firmware

Programming

- Adding Local, Ethernet, and ControlNet I/O
- Testing and Troubleshooting I/O Config
- Controller and Program Tags
- How Ladder Logic Diagrams (LD) differ in ControlLogix compared to A-B PLCs & SLCs
- Creating a Motor Control Ladder Routine
- Using Photo Eyes for Part Sensing (LD)
- How Function Block (FBD) Routines work
- Create a Machine Runtime FBD Routine
- How User Defined Data Types (UDT) work
- Create and use UDTs in Part Counting

Level 2 Lesson Topics:

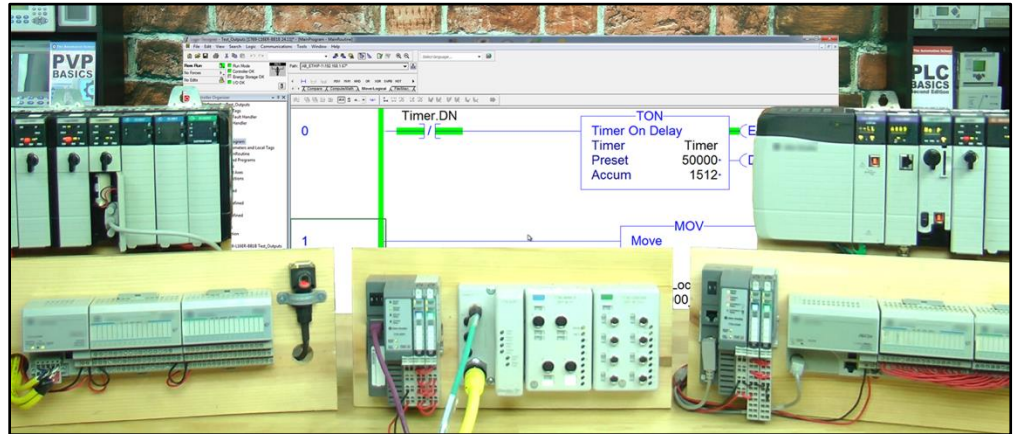
(Included with Extended course only)

Advanced Programming

- How Structured Text (ST) Routines work
- Calculate Scrap Ratios using ST Routine
- Sequential Function Chart (SFC) Routines
- Part Count, Copy, Reset Routine using SFC
- Changing a Project's Version
- Duplicating and Re-using Code
- How Add-on Instructions (AOI) work
- Create, Download, and Use AOIs
- Using PlantPax Objects AOIs
- Using Produced and Consumed Tags
- Messaging ControlLogix Controllers
- Messaging Controllers over DF1
- Messaging Controllers over DH+
- Messaging Controllers over Ethernet
- Bonus: Legacy PLC Comm Setup

VFD Integration (Digital Only)

- PowerFlex VFD Integration
- Using LD and VFDs for Motor Control
- Using FBD for VFD Motor Control
- Controlling VFDs over Ethernet



PAC Basics is designed for those students who are already familiar with PLCs, and would like to learn how to setup, program, and troubleshoot the ControlLogix family of Programmable Automation Controllers (PACs) using RSLogix 5000 and Studio 5000.

What students will learn:

- Understanding the overall design of ControlLogix system and components
- How to configure a system's Controllers, I/O, and Communications Modules
- How to setup Ethernet, Serial DF1, and USB drivers in RSLinx Classic
- The difference between RSLogix 5000 and Studio 5000
- How to setup, configure, and edit RSLogix and Studio 5000 projects
- How to add, edit, and test Local, Ethernet, and ControlNet I/O
- Understanding Controller and Program tags
- How to create and edit Tags and Aliases
- How to setup, configure and edit Tasks, Programs, and Routines
- Understanding how Ladder Logic differs in ControlLogix when compared with other PLCs
- How to create, test, run, and troubleshoot Ladder Diagram Routines
- Understanding Function Block Diagram Routines, and how they Execute
- How to create, test, run, and troubleshoot Function Block Diagram Routines
- How to create and use User Defined Data Types
- And many additional advanced topics in the **Extended Edition**

What students need to complete hands-on exercises:

- Windows 7, 8, or 10 PC with Ethernet or USB
- A CompactLogix or ControlLogix PAC with a communications port compatible with the student's PC (Ethernet, USB, etc.)
- A version of RSLogix 5000 or Studio 5000 that is compatible with the student's PC, and with the student's CompactLogix or ControlLogix PAC

Course Editions (Note: Online courses include instructor support, completion certificate, and lifetime access for a single user)

- **TAS-PAC21-O** PAC Basics Standard Online Course (Level 1 Topics, upgradeable to Extended) **\$99⁹⁹**
- **TAS-PAC22-O** PAC Basics Extended Online Course (Level 1 and Level 2 Topics) **\$199⁹⁹**

Note: TheAutomationSchool.com is neither affiliated with or an official representative of any third-party company or product mentioned in this document. All trademarks listed are the property of their respective companies.

Learn how to setup, configure, and program the Siemens S7-1200 and S7-1500 families of Programmable Logic Controllers in [S7 PLCs - Level 1](#)

Level 1 Lesson Topics:

Hardware

- Vital S7 Manuals and Documents
- S7-1500 Overview
- S7-1500 Details
- S7-1500 Tour
- S7-1200 Overview
- S7-1200 Details
- S7-1200 Tour
- Distributed IO
- Component Selection

Memory, Data, Software

- CPU Memory
- Data Blocks, Types, Tags
- Programs, Modes, Execution
- TIA Portal 21 Day Trial
- Automation License Manager
- Remaining Trial Days
- Intro to Using TIA Portal

Communications, Setup, Test

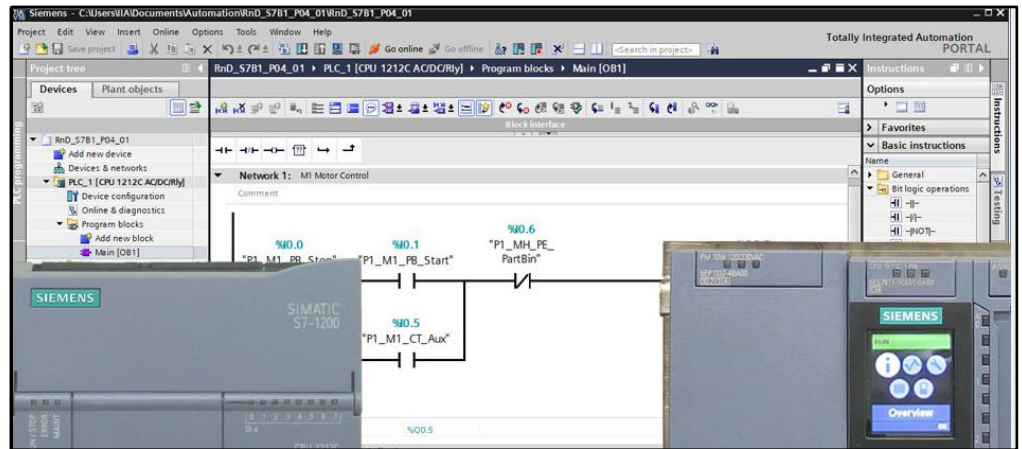
- Identify CPU Model, IP Address, Firmware
- Download and Update CPU Firmware
- Reset CPU Memory
- Resetting to Factory Defaults
- Add, Test, and Force S7-1500 IO
- Add, Test, and Force S7-1200 IO

Programming

- IEC-61131, First Program Details
- Create, Load, Test First Program
- Load and Test First Program with PLCsim
- Boolean Logic, Transition, Latch
- Set, Reset, Edge Detection, Toggle
- First Scan, Clock Bits
- Motor Control, Permissives
- IEC 61131-3 Timers
- TON On Delay, TON Extra Credit
- TOF Off Delay
- TONR Time Accumulator
- Memory Reserve, HMI Start, Etc.
- Counters, Count Up
- Count Down, Count Up Down
- PLC Time, Program Control
- Program: Automatic Mode, Test/Debug
- Program: Maintenance Mode, Test/Debug
- Moving Data & User Data Types
- Math and Comparisons

Bonus Videos

- Bonus 01: SIOS Online Support Interview
- Bonus 02: S7-1200 Prod. Manager Interview
- Bonus 03: S7-1500 Prod. Manager Interview
- Bonus 04: DIO Prod. Manager Interview
- Bonus 05: TIA Portal v17 Interview
- Bonus 06: V17 View of Things Interview
- Bonus 07: PROFINET Interview
- And several more bonus videos



S7 PLCs - Level 1 is designed for those students who have some familiar with PLCs, and would like to learn how to setup, program, and troubleshoot the Siemens S7-1200 and S7-1500 family of Programmable Logic Controllers (PLCs) using TIA Portal Step 7.

What students will learn:

- Understanding the overall design of the S7-1200 and S7-1500 system
- TIA Portal license options, including the free 21 day trial, 1 year, and perpetual
- How to connect with PROFINET and change system settings
- How to configure the CPU and flash its firmware
- How to add, edit, test, and force S7-1200 and S7-1500 Signal modules
- Understanding CPU Memory and Data Block Types
- How to setup, configure, and edit Step 7 Projects in TIA Portal
- How to create, download programs to S7-1200, S7-1500, and PLCsim
- Using and troubleshooting Boolean, Transition, and Latching Logic
- Using and troubleshooting Set/Reset, Edge Detection, and Toggle logic
- Using the First Scan and Clock Bits
- Motor Control, Presence Sensing, and Permissives
- Using Timers and Counters in common applications
- Memory Reserve, PLC Time, and Program Control
- Create, Test, and Debug automatic mode logic, maintenance mode logic
- Handling Data, using Math and Comparisons
- Bonus: Eight interviews with Siemens experts on S7 Topics

What students need to complete hands-on exercises:

- Windows 10 PC with Ethernet and an internet connection
- An S7-1200 or S7-1500 PLC, or PLCsim
- A licensed copy of TIA Portal Step 7 that is compatible with the student's PC and PLC, or
- Free 21 Day Trial of TIA Portal Step 7 with PLCsim

Course Editions (Note: Online courses include instructor support, completion certificate, and lifetime access for a single user)

- **TAS-S7C-O** Siemens S7 PLCs – Level 1 Online Course (S7-1200 & S7-1500 covered) **\$199⁹⁹**

Note: TheAutomationSchool.com is neither affiliated with or an official representative of any third-party company or product mentioned in this document. All trademarks listed are the property of their respective companies.

Learn how to setup, configure, and program the **Allen-Bradley PanelView Plus** using View Studio Machine Edition in **PVP Basics**

Lesson Topics:

Hardware

- PanelView Plus 700-1500
- PanelView Plus 400, 600, Compact
- PanelView Plus Version Support
- PanelView Plus 6 Models
- PanelView Plus 7 Models
- Configuration Menu Settings

Software

- Update: Windows Patch Issues
- Introduction to View Studio ME
- Project System Settings
- HMI Tags
- Graphic Displays

Creating and Editing Applications

- Memory Tags
- Default Graphic Displays
- Panel, Text, and Image Objects
- Numeric and String Displays
- Library and Symbol Factory
- Navigation and Testing Applications
- Numeric and String Inputs
- Fill and other Animations
- Arrange, Align, Substitute

Communications

- RSLinx Enterprise
- HMI Device Tags
- Direct Referencing Logix Tags

Graphic Displays

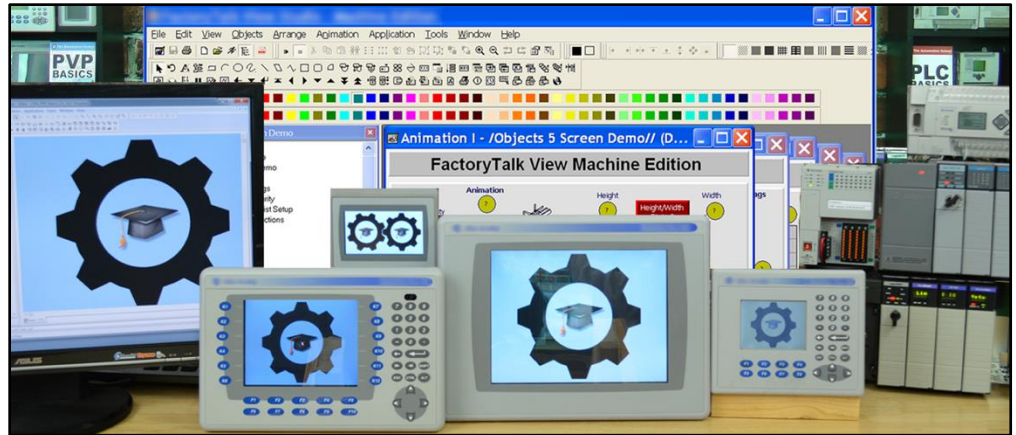
- Display Design
- Find and Replace
- Sliders

Advanced Topics

- Alarms and Alarming
- Using Images on Buttons

Running and Storing Applications

- How to create .MER runtime files
- How to transfer .MER files via RSLinx and the Transfer Wizard
- How to transfer .MERS via Memory Cards
- Correctly backing up an application



PVP Basics is designed for those students who have basic PLC knowledge and would like to learn how to setup, program, and troubleshoot the Allen-Bradley PanelView Plus using View Studio Machine Edition.

What students will learn:

- How to open, edit, and create applications
- How to correctly setup project settings, and what to consider before doing so
- How to setup RSLinx Enterprise Serial and Ethernet communications
- Setup RSLinx Enterprise for use with ControlLogix, CompactLogix, SLC-500, and MicroLogix
- How to create, edit, and use all the different types of HMI Tags
- How to import Tags from RSLogix projects and files
- How to import and export the Tag DB to Excel to speed edits
- How to directly reference PLC Tags online and off
- How to create, edit, and test Graphics, Objects, Symbols, and Libraries
- How to test Displays, as well as test an entire Application on your PC
- How to setup, add, display, and edit Alarms
- How to create and download .MER files over Networks and using Memory Cards
- How to correctly back up and share applications

Who should take this course:

- Anyone with basic electrical knowledge who would like to learn how to use, program, and troubleshoot the Allen-Bradley PanelView Plus HMI using View Studio Machine Edition.

What students need to complete hands-on exercises:

- Windows 7, 8, or 10 PC with a compatible Ethernet or Serial port and an online connection.
- View Studio Machine Edition (lesson about how to get a free demo version is included)
- An A-B PLC or PAC compatible with Student's PC for RSLinx communication lessons
- An Allen-Bradley PanelView Plus for Configuration and Download lessons

Course Editions (Note: Online courses include instructor support, completion certificate, and lifetime access)

- **TAS-PVP12-O** PVP Basics Plus First Edition Level 1 Online Course with Ultimate PVP Course Upgrade **\$49⁹⁹**

Note: TheAutomationSchool.com is neither affiliated with or an official representative of any automation manufacturer listed in this document. All trademarks listed are the property of their respective companies.

Learn to create, edit, and deploy FactoryTalk View Site Edition applications using FactoryTalk View Studio in ViewSE Basics

Lesson Topics:

Software Overview

- What is ViewSE?
- Navigating View Studio
- Sample Applications
- Restoring Applications

Creating and Editing Applications

- Creating a Local Application
- Creating Graphic Displays
- Display Settings, Objects
- Color and Fill Animation
- Importing and Using Libraries
- Memory Tags, Numeric Inputs, Sliders
- Duplicate, Export, and Import Tags
- Using Tag Substitution
- On-Top Popup Displays
- Using Parameters and Placeholders
- Creating and using Derived Tags and Expressions

Communications

- Configuring RSLinx Enterprise, Classic
- Direct Reference and Device Tags
- Offline Tag Browsing, Tag Importing

Graphic Displays

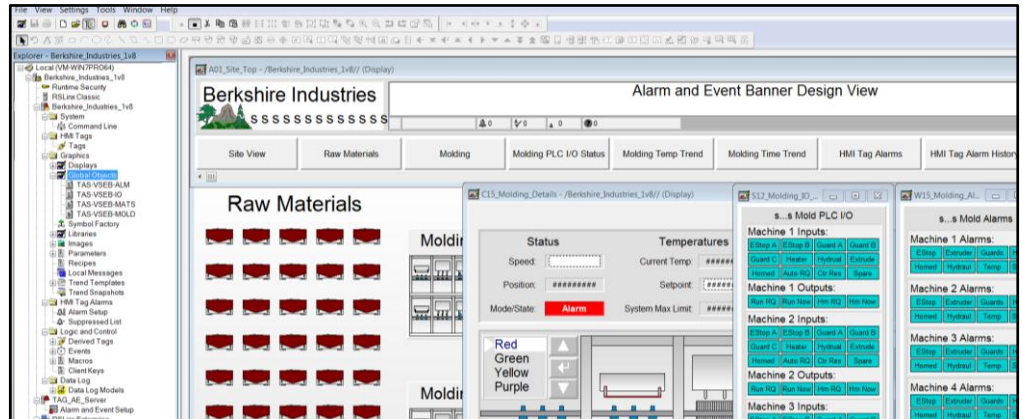
- Display Design and Reuse
- Create and Use Parameter Files
- Using the Command Line and Macros
- Additional Graphical Objects
- Additional Animations
- Building Buttons, Lights, Switches
- Using Global Objects
- Creating Global Objects

Advanced Topics

- Live and Historical Data Trends
- File Set and ODBC Datalogs
- Using Trend Templates
- HMI Tag Alarm Setup, Logs, Objects
- A&E Tag Alarm Setup, Logs, Objects
- A&E Instruction Alarms
- Docked Displays, Find and Replace
- Securing your Application
- Configuring and Publishing ViewPoint

Deploying Applications

- Complete Backup including FTAE, SQL
- OWS Setup and Configuration
- Deploying Application to OWS



ViewSE Basics is designed for those students who want to learn how to create, edit, and deploy FactoryTalk View Site Edition Local Station applications using FactoryTalk View Studio Enterprise.

What students will learn:

- What FactoryTalk ViewSE is, and how to find its documentation and downloads
- Understanding how ViewSE works, and how to create ViewSE Applications
- Graphic Displays and settings, Object Properties, and In-place Editing
- Testing Displays, Creating Client Files, and Editing running applications
- Using Drawing objects, Library Objects, and the Symbol Factory
- HMI System Tags, Numeric Displays, Color and Fill Animations
- Creating, editing, and duplicating Tags, Importing Displays, Using Numeric Inputs
- Slider Animation, Tag Substitution, Tag Placeholders and Parameters
- Using On Top Displays, Expressions, Derived Tags, and Events
- Setting up RSLinx Enterprise, RSLinx Classic, and Using Direct References and Device Tags
- Offline Browsing and Tag Importing, Creating and Using Parameter Files and Placeholders
- Command Line use, Using and Creating Macros, Using and Creating Global Objects
- Datalogging and Trending, HMI Tag Alarms and Alarm and Event Alarming
- User, Group, and Application Security, Backing up Applications, Using FT ViewPoint
- Setting up an Operator Workstation, Restoring and Running and Application

Who should take this course:

- Anyone who would like to learn how to create, edit, and deploy ViewSE projects.

What students need to complete optional hands-on exercises:

- A compatible Windows PC to install and run "View Studio Enterprise" on
- A working copy of FactoryTalk View Studio Enterprise Edition (see note below)
- An A-B PLC or PAC (lesson included on how to download a free PLC emulator)

Note: There are no free editions of the programming software, but demo editions are available from Rockwell

Course Editions (Note: Online courses include instructor support, completion certificate, and lifetime access for a single user)

- **TAS-VSE21-O** ViewSE Basics Online Course **\$199.99**

Note: TheAutomationSchool.com is neither affiliated with or an official representative of any automation manufacturer listed in this document. All trademarks listed are the property of their respective companies.

Learn to backup PowerFlex Drives using **Connected Components Workbench (CCW)** over Ethernet, USB, and with the 1203-USB cable in [CCW VFD Quickstart](#)

Lesson Topics:

- Lesson 1: CCW VFD Intro
- Lesson 2.1: Downloading CCW
- Lesson 2.2: Installing CCW
- Update: Win 7/8.1/10 Patch Issues
- Lesson 3.1: Setup Ethernet
- Lesson 3.2: Setup USB
- Lesson 3.3: Setup 1203-USB
- Lesson 4.1: Using Ethernet
- Lesson 4.2: Using USB
- Lesson 4.3: Using 1203-USB
- Lesson 5: Final Lesson
- Update: How To Find Your Local Rep
- Bonus 1: EIP from Keypad
- Bonus 2: EIP via BOOTP

What students will learn:

- Where to download a free copy of CCW
- How to install CCW, including how to work around the .NET issue
- How to download and install drivers and firmware for the 1203-USB cable
- How to setup RSLinx Classic's Ethernet IP and Ethernet Devices Drivers
- How to setup RSLinx Classic's Driver for the 1203-USB cable
- How to download PowerFlex manuals and update files
- How to connect to the PowerFlex 520 series using USB on Windows 10 and 7
- How to use the PowerFlex USB utility to up & download parameters from 520 series VFDs
- How to import, edit, and export PowerFlex USB utility parameter files in CCW
- How to use CCW to upload and download drive parameters over Ethernet
- How to use CCW and the 1203-USB to upload and download drive parameters over DSI
- Bonus: How to set PowerFlex 525's Ethernet Address using its Keypad and BOOTP

Course Editions (Note: Online courses include instructor support, completion certificate, and lifetime access)

- **TAS-VFD11-0** Using CCW with VFDs Quick Start Online Course

\$24.99

 TheAutomationSchool.com/CCWVFD

New and Coming in 2024:

 TheAutomationSchool.com

The Automation School's PLC Application Simulator now available!

- New app **now available** to all PLC students - see lesson 1.05 to request a student license at no charge!

Siemens Unified Basic and Comfort Panel Online Course

- Learn Siemens latest series of HMIs! **Pre-orders available** as of March 14, 2024.

Ladder Logic Basics Online Course

- Ladder Logic Basics course coming Spring of 2024.

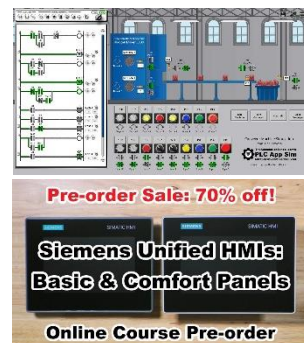
The "Automation" Game Online Course

- Have fun while learning PLC's! Coming Spring of 2024.

In-Person and Virtual Training and Consulting now available!

Contact us via email or our pre-sales phone line for more info:

- Email: ShawnTierney@TheAutomationSchool.com
- Voicemail: 413-749-4300



Note: TheAutomationSchool.com is neither affiliated with or an official representative of any third-party company or product mentioned in this document. All trademarks listed are the property of their respective companies

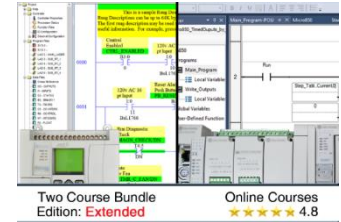
Save up to 50% when you purchase our courses in a bundle:

PLC Course Bundle

This bundle includes our **PLC Basics** Extended Second Edition course along with our **Nano Basics** Extended Edition at a bundle savings of \$20!

- **PLC Course Bundle**

\$179⁻⁹⁸



Logix Course Bundle

This bundle includes our **PAC Basics** (ControlLogix) Extended Edition course along with our **Compact Basics** (CompactLogix) Level 1 & 2 Edition course at a bundle savings of \$50!

- **Logix Course Bundle**

\$299⁻⁹⁸

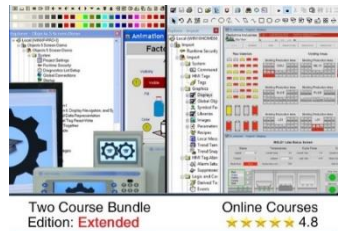


HMI/SCADA Course Bundle

This bundle includes our **PVP Basics** (PanelView Plus) course along with our **ViewSE Basics** course at a bundle savings of \$50!

- **HMI & SCADA Course Bundle**

\$249⁻⁹⁸



MEGA Course Bundle

This bundle includes all seven of our courses (**PLC, Nano, PAC, Compact, PVP, ViewSE, CCW VFD**) along with two bonus courses at a bundle savings of **35%**!

- **Mega Course Bundle**

\$599⁻⁹⁸



Ultimate A-B Course Bundle

This bundle includes our Mega Bundle PLUS pre-orders for four courses (Mastering Logix Applications using PLCLogix 5000 & FactoryIO, Ultimate SLC-500, and Ultimate PLC-5) PLUS the pre-order for ALL FIVE of our new A-B ULTIMATE COURSES (MicroLogix, Micro800, ControlLogix, CompactLogix, and Panelview Plus) PLUS three bonus courses: Logix Live, PLC Basics Remastered, and VMware basics.

- **Ultimate Course Bundle**

\$799⁻⁹⁸



The Automation School's Group Enrollment Program

The Automation School offers group enrollment to our business customers who need to enroll multiple employees in one or more of our courses.

Employers who utilize group enrollment gain access to benefits including the ability to track student progress using a "group progress" webpage, which is accessible to designated "group leaders." Access to this group tracking is completely free for the first year, and access can be extended indefinitely via our affordable group management subscription service.

This webpage not only allows the tracking of student progress, but also provides individual quiz scores and overall completion status. Access to this level of detail has been especially helpful to employers who incentivize their employees to successfully complete the courses they are enrolled in.

Students enrolled through the group enrollment process will have access to the selected courses and instructor support *for as long as they are employed by the company who enrolled them*, as none of our courses come with any artificial deadlines or expiration dates.

Another advantage is the ability to reset a student's seat at a prorated price if they leave your department or company. For instance, if a student leaves your company in the first 12 months* without having taken any of their courses, we can swap that seat out for another one of your employees at no additional cost*. However, if the student complete 50% of his courses before leaving, we can reset his seat for 50%* of the original price. But if a student completes on average 80% of all their courses, and then leaves your company, those courses are considered to be "fully used" and cannot be reset.

If you're interested in enrolling three or more employees in courses at The Automation School, I invite you to reach out to us for a free group enrollment quote using our Inquiry Form [HERE](#).

Common "Group Enrollment" Questions

"What do I need to provide you with in order to enroll a group of employees in online courses at The Automation School?"

In order for us to provide you with a group enrollment quote, we'll need to know how many students you want to enroll (minimum of three,) which courses you wish to enroll them in, and if you'd like to pre-pay for group management access after the initial twelve months. This information can be submitted to us using our Group Enrollment Inquiry Form [HERE](#).

When you place your group enrollment order you'll also need to provide us with the name and work email address of each student (via email or during checkout.) Also, if you'd like to make use of the group management student tracking webpage (complimentary for the first 12 months,) we'll also need at least one group manager's name and work email address as well.

"After enrolling a group of employees, if one of them leaves my department or our company can I pass that seat onto to a replacement?"

Yes! As long as the original enrollee has not completed more than 10% of any course, we can pass the former enrollee's seat on to a new employee *totally free of charge within the first 12 months!** If the original student has completed more than 10% of any course, their seat can be re-allocated at a pro-rated cost*. Note that if the student has completed an average of 80% of any their courses, his seat is then considered "fully used" and can no longer be reset.

To Learn more or get a quote: To contact us about group enrollment, just fill out our short Inquiry Form [HERE](#), and we'll typically get in touch with you within one business day!

*Note: After the first 12 months there is a minimum service fee of \$50 to process seat resets and transfers for companies who forgo our group management subscription service.

Training Quote Request Form:

Fill in and email form to ShawnTierney@TheAutomationSchool.com, or call us at 413-749-4300

QTY	PN / Link	Page	Description	Price Each	Extended Price
___	TAS-PLC91-O	2	A-B PLC Basics™ First Edition Remastered (MicroLogix)	\$34 ⁹⁹	_____
___	TAS-PLC22-O	2	A-B PLC Basics™ Second Edition Level 1+2 (MicroLogix)	\$99 ⁹⁹	_____
___	TAS-NAN21-O	3	A-B Nano Basics™ Standard Level 1 Edition (Micro800)	\$49 ⁹⁹	_____
___	TAS-NAN22-O	3	A-B Nano Basics™ Extended Level 1 & 2 Edition (Micro800)	\$99 ⁹⁹	_____
___	TAS-CPX-21-O	4	A-B Compact Basics™ Standard Level 1 Edition (CompactLogix)	\$99 ⁹⁹	_____
___	TAS-CPX-22-O	4	A-B Compact Basics™ Extended Level 1 & 2 Ed (CompactLogix)	\$149 ⁹⁹	_____
___	TAS-PAC-21-O	5	A-B PAC Basics™ Standard Level 1 Edition (ControlLogix)	\$99 ⁹⁹	_____
___	TAS-PAC-22-O	5	A-B PAC Basics™ Extended Level 1 & 2 Edition (ControlLogix)	\$199 ⁹⁹	_____
___	TAS-S7C-O	6	Siemens S7 PLCs Level 1 Edition (S7-1200 and S7-1500)	\$199 ⁹⁹	_____
___	TAS-PVP-12-O	7	A-B PVP Basics™ Plus Course (PanelView Plus)	\$49 ⁹⁹	_____
___	TAS-VSE-21-O	8	FT ViewSE Basics™ (FactoryTalk View Site Edition)	\$199 ⁹⁹	_____
___	TAS-CCW10-O	9	A-B CCW VFD Quick Start™ (PowerFlex with CCW)	\$24 ⁹⁹	_____
___	TAS-MLP-21-O	-	Mastering Logix Applications™ using PLCLogix 5000 (Trial Included)	\$49 ⁹⁹	_____
___	TAS-MLP-21-S	-	Mastering Logix Applications™ with PLCLogix 5000 Full License	\$299 ⁹⁷	_____
___	TAS-PCB-22-O	-	A-B PLC Course Bundle: MicroLogix & Micro800 Extended Ed.	\$179 ⁹⁸	_____
___	TAS-LGB-22-O	-	A-B Logix Course Bundle: Control & CompactLogix Extended	\$299 ⁹⁸	_____
___	TAS-PVB-22-O	-	A-B HMI SCADA Course Bundle: PanelView Plus & ViewSE	\$249 ⁹⁸	_____
___	TAS-MCB-22-O	-	Mega A-B Online Course Bundle	\$599 ⁹⁸	_____
___	TAS-UCB-22-O	-	Ultimate A-B Online Course and Pre-order Bundle	\$799 ⁹⁸	_____
				Total	_____

Insights in Automation®

PO Box 454
Cheshire, MA 01225
413-749-4300



Credit Card Payment Authorization Form

Sign and complete this form to authorize *Insights In Automation* to make a one-time charge to the credit card listed below for training services provided by TheAutomationSchool.com.

By signing this form, you give us permission to charge your account for the amount indicated below for the training services (online, virtual, or in person courses) listed on the reference quotation.

This form is permission for a single transaction only, and does not provide authorization for any additional charges to your account.

Credit Card Authorized for the purchase of items on *Insights In Automation* quote
number _____ at a cost in US Dollars of _____

Credit Card Type:

_____ Visa _____ Mastercard _____ American Express

Cardholder Name: _____

Company Name: _____

Card Billing Address: _____

Card Billing Town/City: _____ State: _____ ZIP: _____

Card Number: _____

Expiration Date: _____ Security Code: _____

Authorized Signature: _____

Printed Name: _____

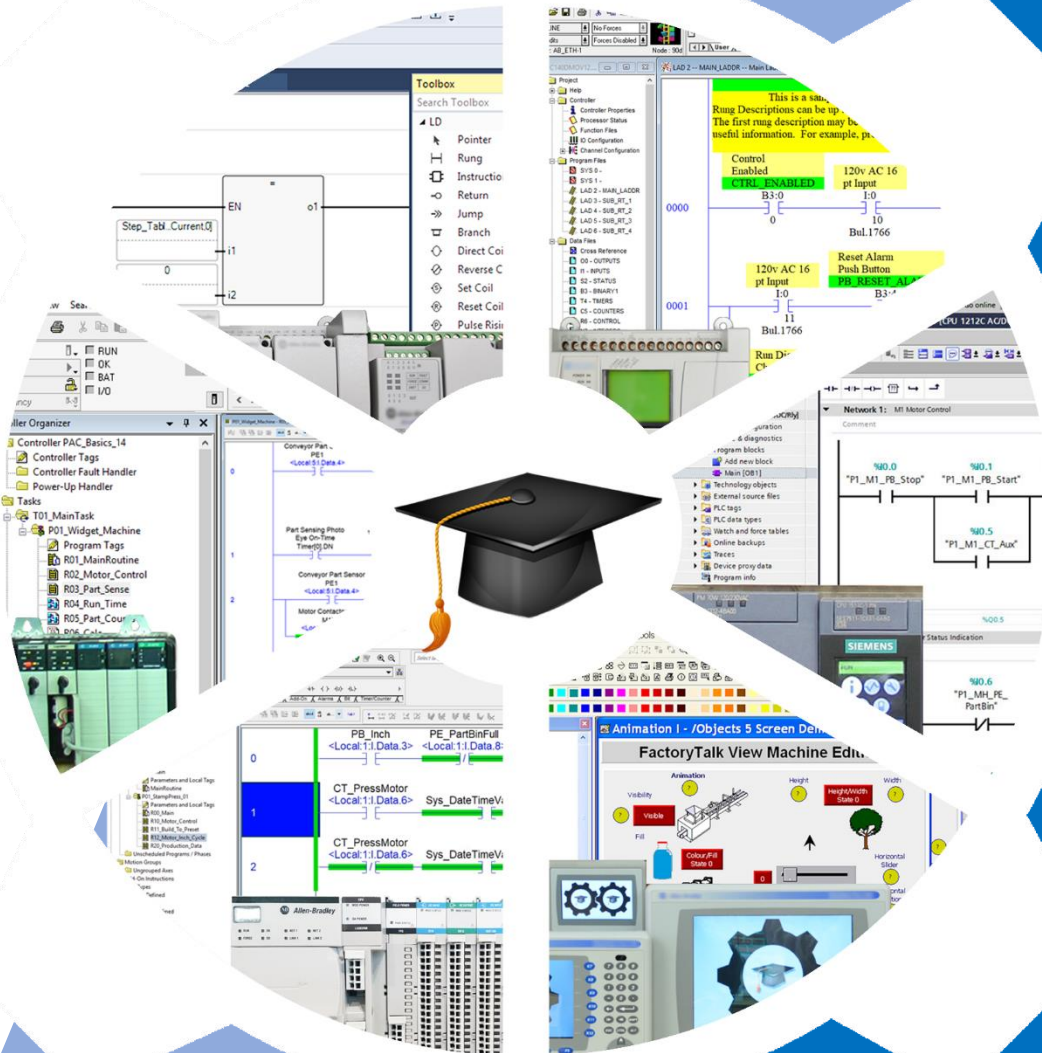
Cardholder Telephone Number: _____

I authorize Insights In Automation to charge the credit card indicated in this authorization form according to the terms outlined above. This payment authorization is for training provided at TheAutomationSchool.com as described in the reference quotation, and for the amount indicated above, and is valid for one time use only. I certify that I am an authorized user of this credit card and that I will not dispute the payment with my credit card company so long as the transaction corresponds to the terms indicated in this form. (Submit form via email form to ShawnTierney@TheAutomationSchool.com)

Insights In Automation®



The Automation Blog, Podcast, Minute, Show, Tech Tips, and School



Insights In Automation®

PO Box 454

Cheshire, MA 01225