

Learn how to setup, configure, and program the **Allen-Bradley PanelView Plus** using View Studio Machine Edition in **PVP Basics**

## Lesson Topics:

### Hardware

- PanelView Plus 700-1500
- PanelView Plus 400, 600, Compact
- PanelView Plus Version Support
- PanelView Plus 6 Models
- PanelView Plus 7 Models
- Configuration Menu Settings

### Software

- Update: Windows Patch Issues
- Introduction to View Studio ME
- Project System Settings
- HMI Tags
- Graphic Displays

### Creating and Editing Applications

- Memory Tags
- Default Graphic Displays
- Panel, Text, and Image Objects
- Numeric and String Displays
- Library and Symbol Factory
- Navigation and Testing Applications
- Numeric and String Inputs
- Fill and other Animations
- Arrange, Align, Substitute

### Communications

- RSLinx Enterprise
- HMI Device Tags
- Direct Referencing Logix Tags

### Graphic Displays

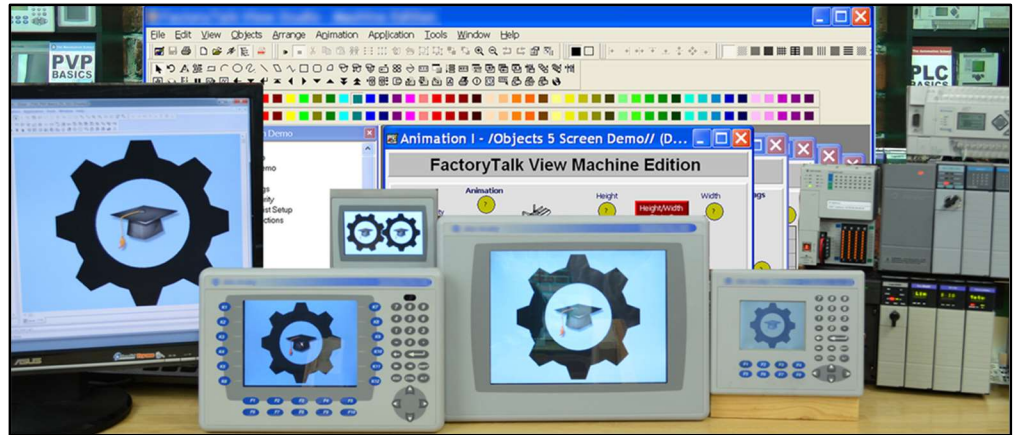
- Display Design
- Find and Replace
- Sliders

### Advanced Topics

- Alarms and Alarming
- Using Images on Buttons

### Running and Storing Applications

- How to create .MER runtime files
- How to transfer .MER files via RSLinx and the Transfer Wizard
- How to transfer .MERS via Memory Cards
- Correctly backing up an application



**PVP Basics is designed for those students who have basic PLC knowledge and would like to learn how to setup, program, and troubleshoot the Allen-Bradley PanelView Plus using View Studio Machine Edition.**

### What students will learn:

- How to open, edit, and create applications
- How to correctly setup project settings, and what to consider before doing so
- How to setup RSLinx Enterprise Serial and Ethernet communications
- Setup RSLinx Enterprise for use with ControlLogix, CompactLogix, SLC-500, and MicroLogix
- How to create, edit, and use all the different types of HMI Tags
- How to import Tags from RSLogix projects and files
- How to import and export the Tag DB to Excel to speed edits
- How to directly reference PLC Tags online and off
- How to create, edit, and test Graphics, Objects, Symbols, and Libraries
- How to test Displays, as well as test an entire Application on your PC
- How to setup, add, display, and edit Alarms
- How to create and download .MER files over Networks and using Memory Cards
- How to correctly back up and share applications

### Who should take this course:

- Anyone with basic electrical knowledge who would like to learn how to use, program, and troubleshoot the Allen-Bradley PanelView Plus HMI using View Studio Machine Edition.

### What students need to complete hands-on exercises:

- Windows 7, 8, or 10 PC with a compatible Ethernet or Serial port and an online connection.
- View Studio Machine Edition (lesson about how to get a free demo version is included)
- An A-B PLC or PAC compatible with Student's PC for RSLinx communication lessons
- An Allen-Bradley PanelView Plus for Configuration and Download lessons

### Course Editions (Note: Online courses include instructor support, completion certificate, and lifetime access)

- **TAS-PVP12-O** PVP Basics Plus First Edition Level 1 Online Course with Ultimate PVP Course Upgrade **\$49<sup>99</sup>**

Note: TheAutomationSchool.com is neither affiliated with or an official representative of any automation manufacturer listed in this document. All trademarks listed are the property of their respective companies.