

Learn to create, edit, and deploy **FactoryTalk View Site Edition** applications using FactoryTalk View Studio in **ViewSE Basics**

Lesson Topics:

Software Overview

- What is ViewSE?
- Navigating View Studio
- Sample Applications
- Restoring Applications

Creating and Editing Applications

- Creating a Local Application
- Creating Graphic Displays
- Display Settings, Objects
- Color and Fill Animation
- Importing and Using Libraries
- Memory Tags, Numeric Inputs, Sliders
- Duplicate, Export, and Import Tags
- Using Tag Substitution
- On-Top Popup Displays
- Using Parameters and Placeholders
- Creating and using Derived Tags and Expressions

Communications

- Configuring RSLinx Enterprise, Classic
- Direct Reference and Device Tags
- Offline Tag Browsing, Tag Importing

Graphic Displays

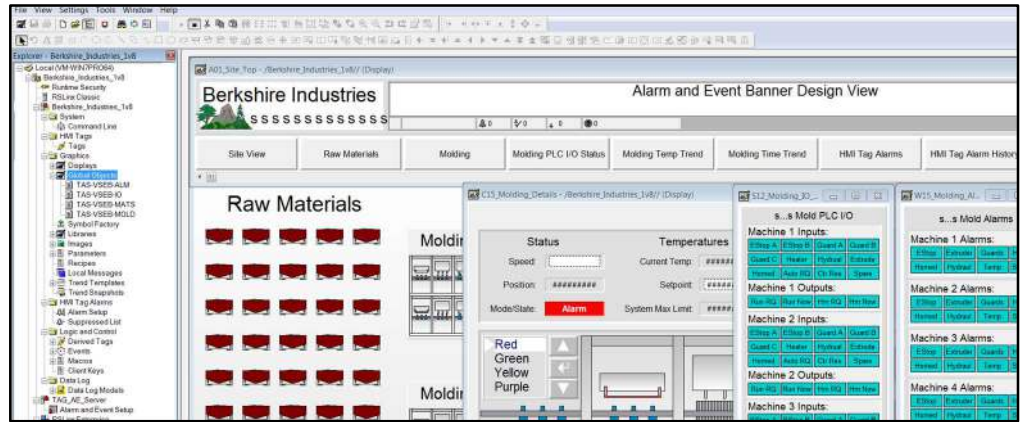
- Display Design and Reuse
- Create and Use Parameter Files
- Using the Command Line and Macros
- Additional Graphical Objects
- Additional Animations
- Building Buttons, Lights, Switches
- Using Global Objects
- Creating Global Objects

Advanced Topics

- Live and Historical Data Trends
- File Set and ODBC Datalogs
- Using Trend Templates
- HMI Tag Alarm Setup, Logs, Objects
- A&E Tag Alarm Setup, Logs, Objects
- A&E Instruction Alarms
- Docked Displays, Find and Replace
- Securing your Application
- Configuring and Publishing ViewPoint

Deploying Applications

- Complete Backup including FTAE, SQL
- OWS Setup and Configuration
- Deploying Application to OWS



ViewSE Basics is designed for those students who want to learn how to create, edit, and deploy **FactoryTalk View Site Edition Local Station** applications using **FactoryTalk View Studio Enterprise**.

What students will learn:

- What FactoryTalk ViewSE is, and how to find its documentation and downloads
- Understanding how ViewSE works, and how to create ViewSE Applications
- Graphic Displays and settings, Object Properties, and In-place Editing
- Testing Displays, Creating Client Files, and Editing running applications
- Using Drawing objects, Library Objects, and the Symbol Factory
- HMI System Tags, Numeric Displays, Color and Fill Animations
- Creating, editing, and duplicating Tags, Importing Displays, Using Numeric Inputs
- Slider Animation, Tag Substitution, Tag Placeholders and Parameters
- Using On Top Displays, Expressions, Derived Tags, and Events
- Setting up RSLinx Enterprise, RSLinx Classic, and Using Direct References and Device Tags
- Offline Browsing and Tag Importing, Creating and Using Parameter Files and Placeholders
- Command Line use, Using and Creating Macros, Using and Creating Global Objects
- Datalogging and Trending, HMI Tag Alarms and Alarm and Event Alarming
- User, Group, and Application Security, Backing up Applications, Using FT ViewPoint
- Setting up an Operator Workstation, Restoring and Running and Application

Who should take this course:

- Anyone who would like to learn how to create, edit, and deploy ViewSE projects.

What students need to complete optional hands-on exercises:

- A compatible Windows PC to install and run "View Studio Enterprise" on
- A working copy of FactoryTalk View Studio Enterprise Edition (see note below)
- An A-B PLC or PAC (lesson included on how to download a free PLC emulator)

Note: There are no free editions of the programming software, but demo editions are available from Rockwell

Course Editions (Note: Online courses include instructor support, completion certificate, and lifetime access for a single user)

- **TAS-VSE21-O** ViewSE Basics Online Course

\$199.99

Note: TheAutomationSchool.com is neither affiliated with or an official representative of any automation manufacturer listed in this document. All trademarks listed are the property of their respective companies.