

Learn how to setup, configure, and program the **Allen-Bradley PanelView Plus** using View Studio Machine Edition in **PVP Basics**

Course Lessons:

Hardware

- PanelView Plus 700-1500
- PanelView Plus 400, 600, Compact
- PanelView Plus Version Support
- PanelView Plus 6 Models
- PanelView Plus 7 Models
- Configuration Menu Settings

Software

- Update: Windows Patch Issues
- Introduction to View Studio ME
- Project System Settings
- HMI Tags
- Graphic Displays

Creating and Editing Applications

- Memory Tags
- Default Graphic Displays
- Panel, Text, and Image Objects
- Numeric and String Displays
- Library and Symbol Factory
- Navigation and Testing Applications
- Numeric and String Inputs
- Fill and other Animations
- Arrange, Align, Substitute

Communications

- RSLinx Enterprise
- HMI Device Tags
- Direct Referencing Logix Tags

Graphic Displays

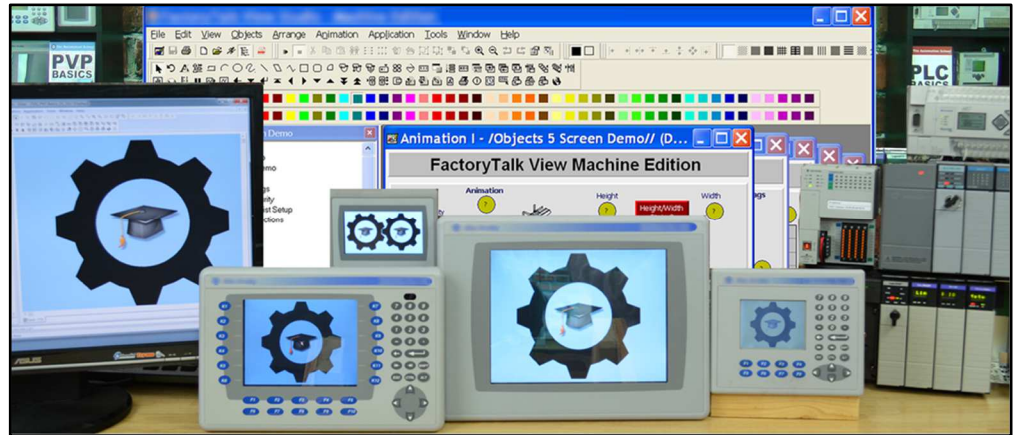
- Display Design
- Find and Replace
- Sliders

Advanced Topics

- Alarms and Alarming
- Using Images on Buttons

Running and Storing Applications

- How to create .MER runtime files
- How to transfer .MER files via RSLinx and the Transfer Wizard
- How to transfer .MERS via Memory Cards
- Correctly backing up an application



PVP Basics is designed for those students who have basic PLC knowledge and would like to learn how to setup, program, and troubleshoot the Allen-Bradley PanelView Plus using View Studio Machine Edition.

What students will learn:

- How to open, edit, and create applications
- How to correctly setup project settings, and what to consider before doing so
- How to setup RSLinx Enterprise Serial and Ethernet communications
- Setup RSLinx Enterprise for use with ControlLogix, CompactLogix, SLC-500, and MicroLogix
- How to create, edit, and use all the different types of HMI Tags
- How to import Tags from RSLogix projects and files
- How to import and export the Tag DB to Excel to speed edits
- How to directly reference PLC Tags online and off
- How to create, edit, and test Graphics, Objects, Symbols, and Libraries
- How to test Displays, as well as test an entire Application on your PC
- How to setup, add, display, and edit Alarms
- How to create and download .MER files over Networks and using Memory Cards
- How to correctly back up and share applications

Who should take this course:

- Anyone with basic electrical knowledge who would like to learn how to use, program, and troubleshoot the Allen-Bradley PanelView Plus HMI using View Studio Machine Edition.

What students need to complete hands-on exercises:

- Windows 7, 8, or 10 PC with a compatible Ethernet or Serial port.
- View Studio Machine Edition (lesson about how to get a free demo version is included)
- An A-B PLC or PAC compatible with Student's PC for RSLinx communication lessons
- An Allen-Bradley PanelView Plus for Configuration and Download lessons

Course Editions (Note: Online courses include instructor support, completion certificate, and lifetime access)

- **PVP "Core" Basics First Edition Online Course** **\$69**

Note: TheAutomationSchool.com is neither affiliated with or an official representative of any automation manufacturer listed in this document. All trademarks listed are the property of their respective companies.

The Automation School's Group Enrollment Program

The Automation School offers group enrollment to our business customers who need to enroll multiple employees in one or more of our courses.

Employers who utilize group enrollment gain access to several benefits, including group discounts based on the number of students being enrolled.

Our group enrollment program also provides employers with the ability to track student progress using a complimentary "group progress" webpage accessible to designated "group leaders."

This webpage not only allows the tracking of student progress, but also provides individual quiz scores and overall completion status. Access to this level of detail has been especially helpful to employers who incentivize their employees to successfully complete the courses they're enrolled in.

And just like with standard enrollees, students enrolled through the group enrollment process will have access to their courses *for as long as they are employed by the company who enrolled them*, as none of our courses come with any artificial deadlines or expiration dates.

So, if you're considering enrolling three or more employees in courses at The Automation School, I invite you to reach out to us for a free group enrollment quote.

Sincerely,

Shawn Tierney,
Instructor and Founder, The Automation School

Common "Group Enrollment" Questions

"What do I need to provide you with in order to enroll a group of employees in online courses at The Automation School?"

First, in order for us to provide you with a group enrollment quote, we'll need to know how many students you want to enroll (minimum of three,) and which courses you wish to enroll them in. This information can be submitted to us using our Group Enrollment Inquiry Form [HERE](#).

Then when you place your group enrollment order, you'll need to provide us with the name of each student as well as their company email address. If you wish to make use of the student tracking webpage, we'll also need at least one group manager's name and email address as well.

"After enrolling a group of employees, if one of them leaves my department or our company can I pass that seat onto to a replacement?"

Yes! As long as the original enrollee has not completed more than 25% of the course, we can pass the former enrollee's seat on to a new employee *totally free of charge!* If the original student has completed more than 25% of the course, thier seat can be re-allocated at a pro-rated cost (*i.e. if the previous student completed 50% of the course, reallocating their seat would cost 50% of a new seat*)

"How can I find out more about enrolling a group of my employees in online courses at The Automation School?"

To get in contact with us about group enrollment, just fill out our short Group Enrollment Inquiry form [HERE](#), and we'll typically get in touch with you within one business day!