

Learn to create, edit, and deploy **FactoryTalk View Site Edition** applications using **FactoryTalk View Studio** in **ViewSE Basics**

## Course Lessons:

### Software Overview

- What is ViewSE?
- Navigating View Studio
- Sample Applications
- Restoring Applications

### Creating and Editing Applications

- Creating a Local Application
- Creating Graphic Displays
- Display Settings, Objects
- Color and Fill Animation
- Importing and Using Libraries
- Memory Tags, Numeric Inputs, Sliders
- Duplicate, Export, and Import Tags
- Using Tag Substitution
- On-Top Popup Displays
- Using Parameters and Placeholders
- Creating and using Derived Tags and Expressions

### Communications

- Configuring RSLinx Enterprise, Classic
- Direct Reference and Device Tags
- Offline Tag Browsing, Tag Importing

### Graphic Displays

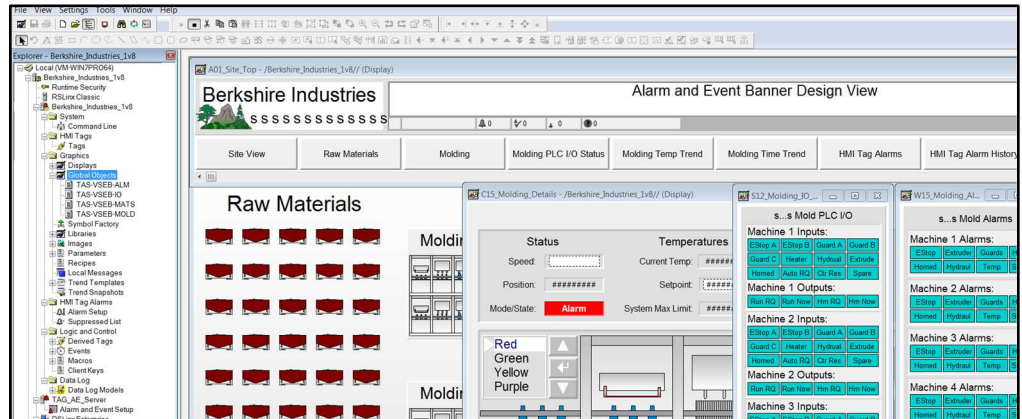
- Display Design and Reuse
- Create and Use Parameter Files
- Using the Command Line and Macros
- Additional Graphical Objects
- Additional Animations
- Building Buttons, Lights, Switches
- Using Global Objects
- Creating Global Objects

### Advanced Topics

- Live and Historical Data Trends
- File Set and ODBC Datalogs
- Using Trend Templates
- HMI Tag Alarm Setup, Logs, Objects
- A&E Tag Alarm Setup, Logs, Objects
- A&E Instruction Alarms
- Docked Displays, Find and Replace
- Securing your Application
- Configuring and Publishing ViewPoint

### Deploying Applications

- Complete Backup including FTAE, SQL
- OWS Setup and Configuration
- Deploying Application to OWS



**ViewSE Basics** is designed for those students who want to learn how to create, edit, and deploy **FactoryTalk View Site Edition Local Station** applications using **FactoryTalk View Studio Enterprise**.

### What students will learn:

- What FactoryTalk ViewSE is, and how to find its documentation and downloads
- Understanding how ViewSE works, and how to create ViewSE Applications
- Graphic Displays and settings, Object Properties, and In-place Editing
- Testing Displays, Creating Client Files, and Editing running applications
- Using Drawing objects, Library Objects, and the Symbol Factory
- HMI System Tags, Numeric Displays, Color and Fill Animations
- Creating, editing, and duplicating Tags, Importing Displays, Using Numeric Inputs
- Slider Animation, Tag Substitution, Tag Placeholders and Parameters
- Using On Top Displays, Expressions, Derived Tags, and Events
- Setting up RSLinx Enterprise, RSLinx Classic, and Using Direct References and Device Tags
- Offline Browsing and Tag Importing, Creating and Using Parameter Files and Placeholders
- Command Line use, Using and Creating Macros, Using and Creating Global Objects
- Datalogging and Trending, HMI Tag Alarms and Alarm and Event Alarming
- User, Group, and Application Security, Backing up Applications, Using FT ViewPoint
- Setting up an Operator Workstation, Restoring and Running and Application

### Who should take this course:

- Anyone who would like to learn how to create, edit, and deploy ViewSE projects.

### What students need to complete optional hands-on exercises:

- A compatible Windows PC to install and run "View Studio Enterprise" on
- A working copy of FactoryTalk View Studio Enterprise Edition (see note below)
- An A-B PLC or PAC (lesson included on how to download a free PLC emulator)

Note: There are no free editions of the programming software, but demo editions are available from Rockwell

### Course Editions (Note: Online courses include instructor support, completion certificate, and lifetime access for a single user)

- **ViewSE Basics Online Course**

**\$199**

Note: TheAutomationSchool.com is neither affiliated with or an official representative of any automation manufacturer listed in this document. All trademarks listed are the property of their respective companies.

# The Automation School's Group Enrollment Program

The Automation School offers group enrollment to our business customers who need to enroll multiple employees in one or more of our courses.

Employers who utilize group enrollment gain access to several benefits, including group discounts based on the number of students being enrolled.

Our group enrollment program also provides employers with the ability to track student progress using a complimentary "group progress" webpage accessible to designated "group leaders."

This webpage not only allows the tracking of student progress, but also provides individual quiz scores and overall completion status. Access to this level of detail has been especially helpful to employers who incentivize their employees to successfully complete the courses they're enrolled in.

And just like with standard enrollees, students enrolled through the group enrollment process will have access to their courses *for as long as they are employed by the company who enrolled them*, as none of our courses come with any artificial deadlines or expiration dates.

So, if you're considering enrolling three or more employees in courses at The Automation School, I invite you to reach out to us for a free group enrollment quote.

Sincerely,

Shawn Tierney,  
Instructor and Founder, The Automation School

---

## Common "Group Enrollment" Questions

***"What do I need to provide you with in order to enroll a group of employees in online courses at The Automation School?"***

First, in order for us to provide you with a group enrollment quote, we'll need to know how many students you want to enroll (minimum of three,) and which courses you wish to enroll them in. This information can be submitted to us using our Group Enrollment Inquiry Form [HERE](#).

Then when you place your group enrollment order, you'll need to provide us with the name of each student as well as their company email address. If you wish to make use of the student tracking webpage, we'll also need at least one group manager's name and email address as well.

***"After enrolling a group of employees, if one of them leaves my department or our company can I pass that seat onto to a replacement?"***

Yes! As long as the original enrollee has not completed more than 25% of the course, we can pass the former enrollee's seat on to a new employee *totally free of charge!* If the original student has completed more than 25% of the course, thier seat can be re-allocated at a pro-rated cost (*i.e. if the previous student completed 50% of the course, reallocating their seat would cost 50% of a new seat*)

***"How can I find out more about enrolling a group of my employees in online courses at The Automation School?"***

To get in contact with us about group enrollment, just fill out our short Group Enrollment Inquiry form [HERE](#), and we'll typically get in touch with you within one business day!